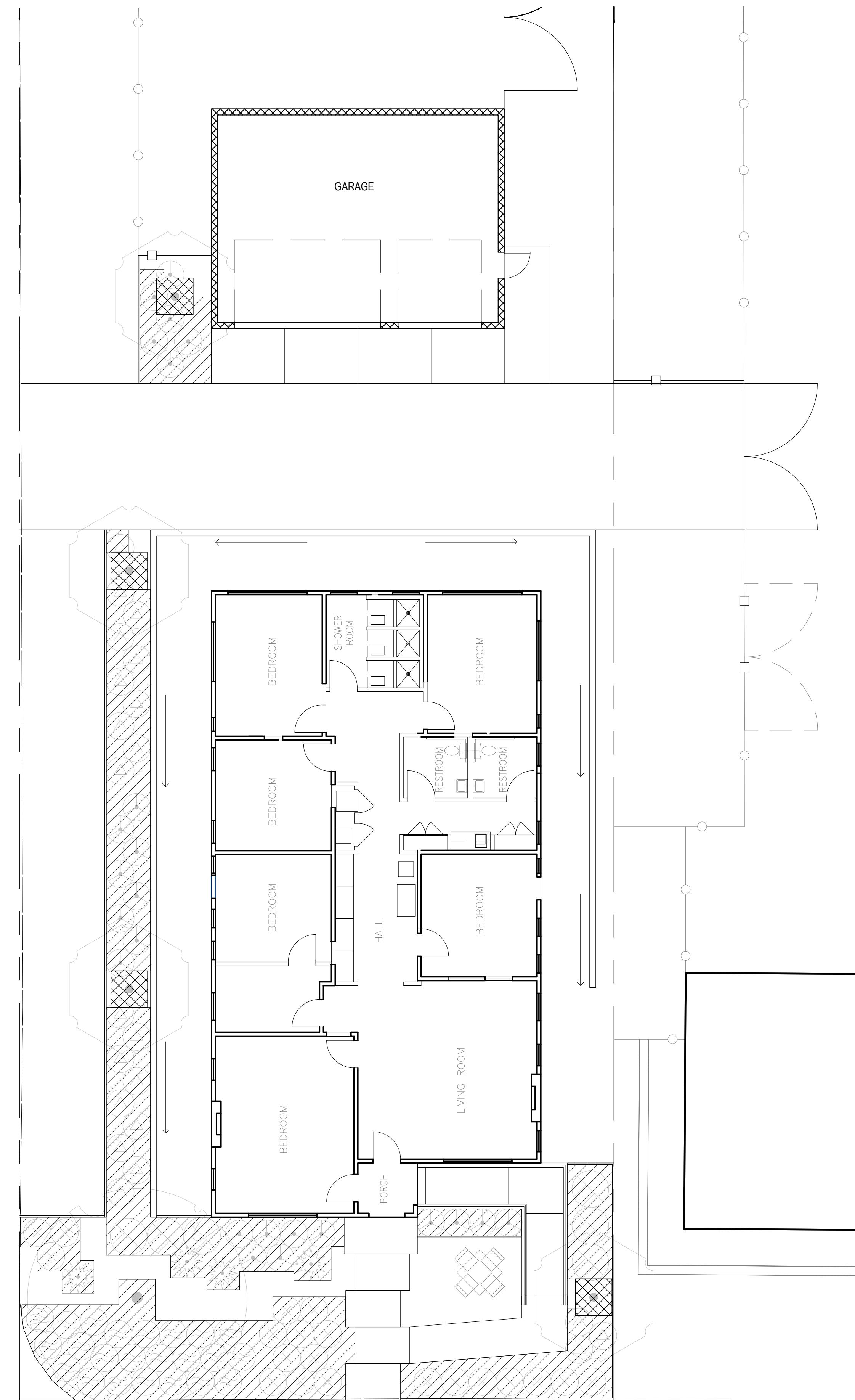


CONSULTANT

DEPARTMENT OF SPACE

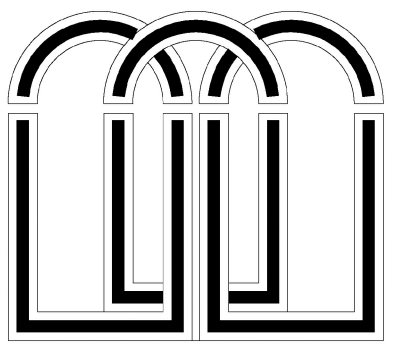
SITE DESIGN STUDIO  
405 H. Fisher Blvd., Suite 201  
Ontario, CA 91711

HYDROZONE LEGEND				
SYMBOL	WATER REQUIREMENT	IRRIGATION METHOD	AREA	% OF IRRIGATED AREA
	LOW	DRIP LINE	1,158 SF	95%
	MODERATE	TREE BUBBLERS	64 SF	5%



ALLEY 30

N. DARTMOUTH PLACE



**SCRIPPS**  
THE WOMEN'S COLLEGE  
CLAREMONT

PROJECT

**SCRIPPS COLLEGE  
240 HOUSE RELOCATION**

ISSUANCES

PLANNING REVIEW	03-09-2026
PLANNING REVIEW 2	03-30-2026

REVISIONS

TITLE

**HYDROZONE PLAN**

**NOT FOR  
CONSTRUCTION**

SCALE

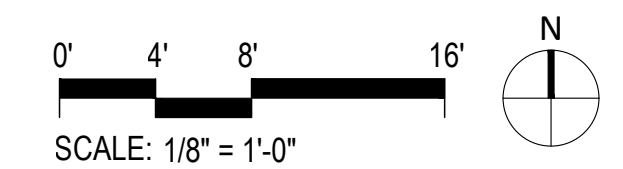
AS NOTED

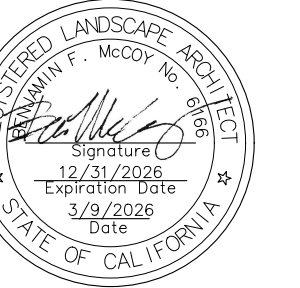
DATE

03-09-2026

JOB NO.

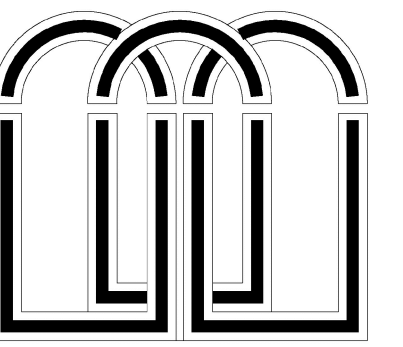
**L1.0**





CONSULTANT

**DEPARTMENT OF SPACE**  
 SITE DESIGN STUDIO  
 405 H. Fisher Hall Blvd., Suite 2B  
 Claremont, CA 91711



**SCRIPPS**  
 THE WOMEN'S COLLEGE  
 CLAREMONT

PROJECT

**SCRIPPS COLLEGE**  
**240 HOUSE RELOCATION**

ISSUANCES

PLANNING REVIEW	03-09-2026
PLANNING REVIEW 2	03-30-2026

REVISONS

TITLE

**PLANTING PLAN**

**NOT FOR CONSTRUCTION**

SCALE

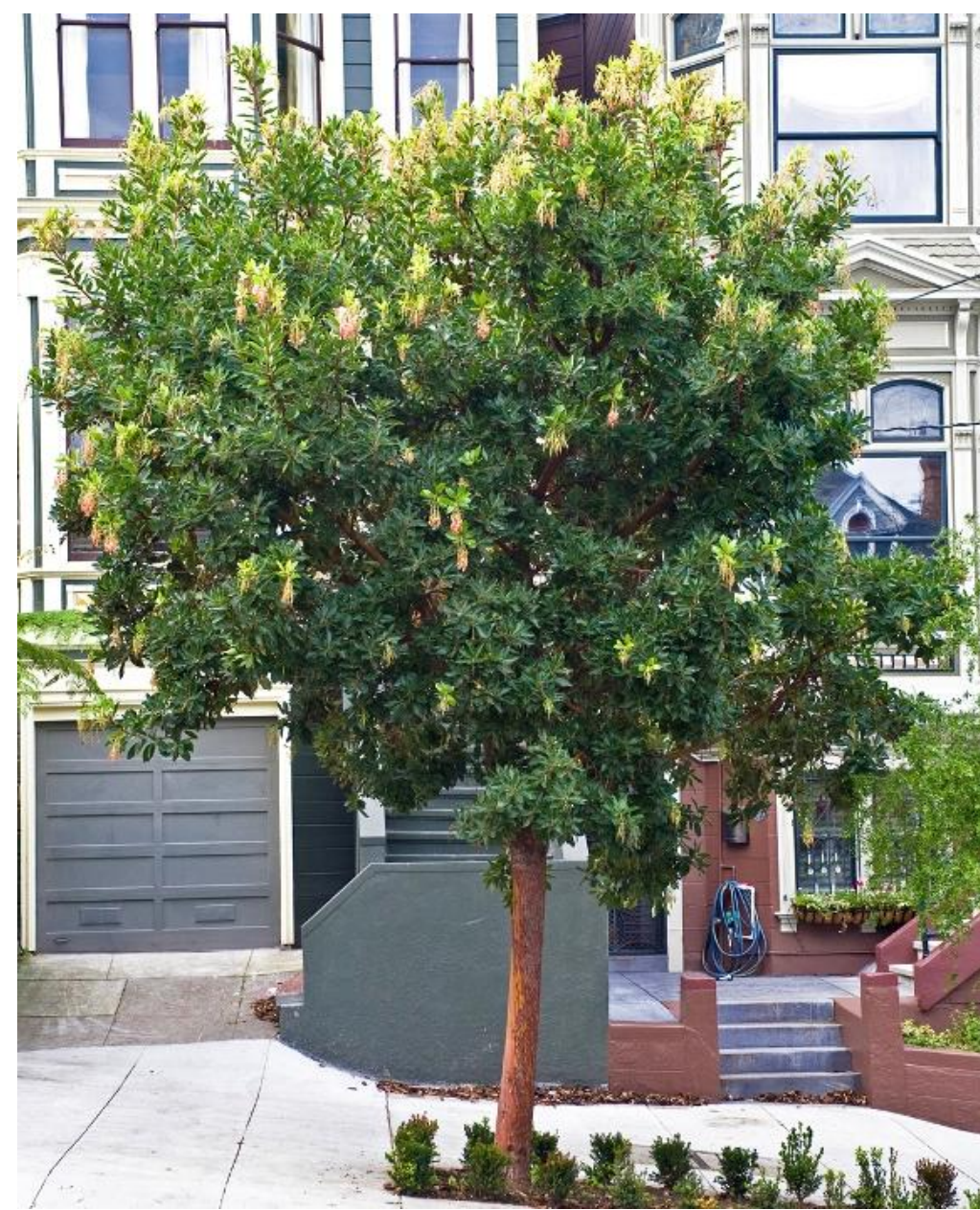
AS NOTED

DATE

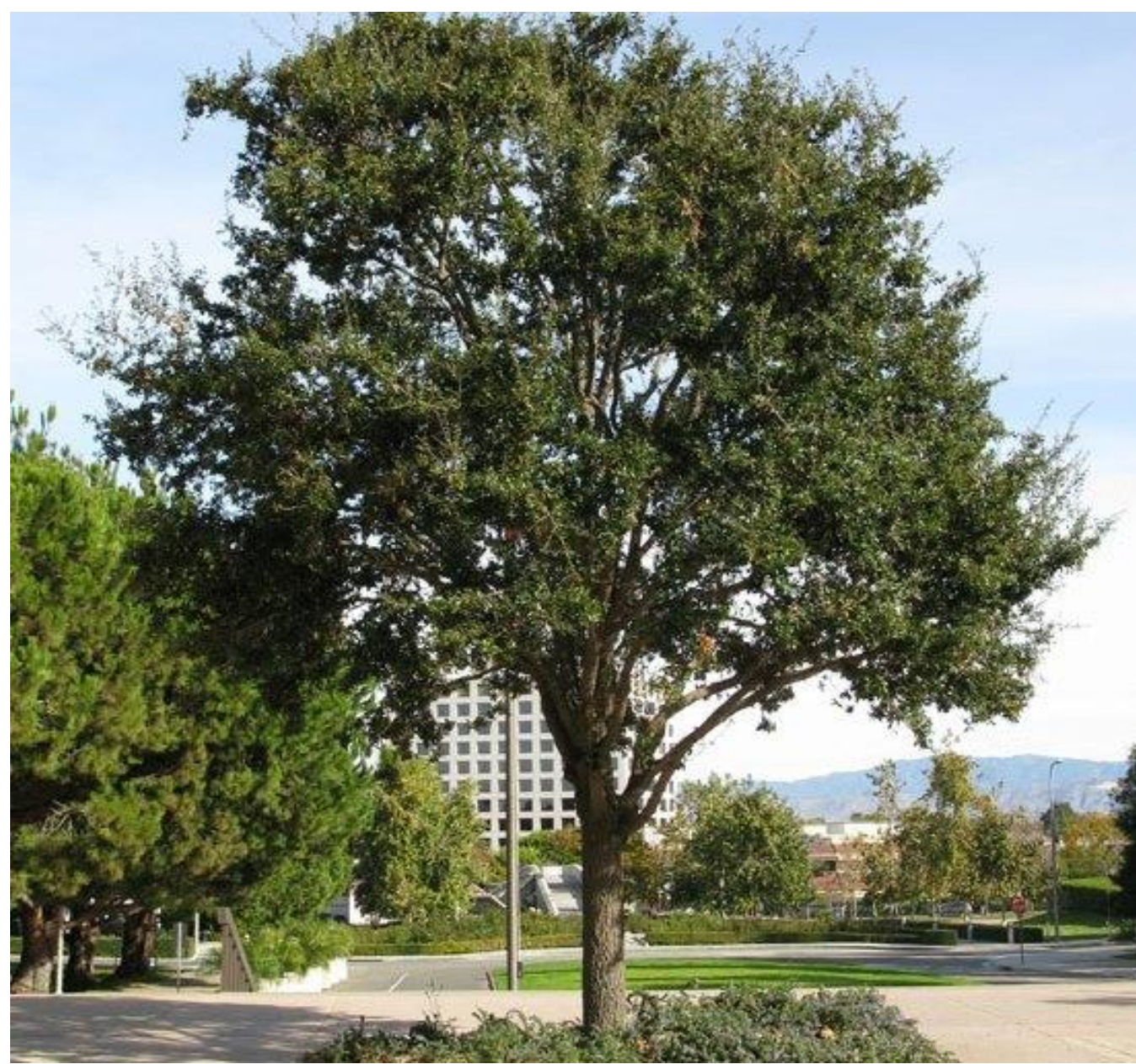
03-09-2026

JOB NO.

**L2.0**



ARBUTUS 'MARINA'  
MARINA STRAWBERRY TREE



QUERCUS VIRGINIANA  
SOUTHERN LIVE OAK



AGAVE BLUE FLAME



WESTRINGIA FRUTICOSA 'SMOKEY'  
SMOKEY COAST ROSEMARY



LANTANA MONTEVIDENSIS 'ALBA'  
WHITE TRAILING LANTANA



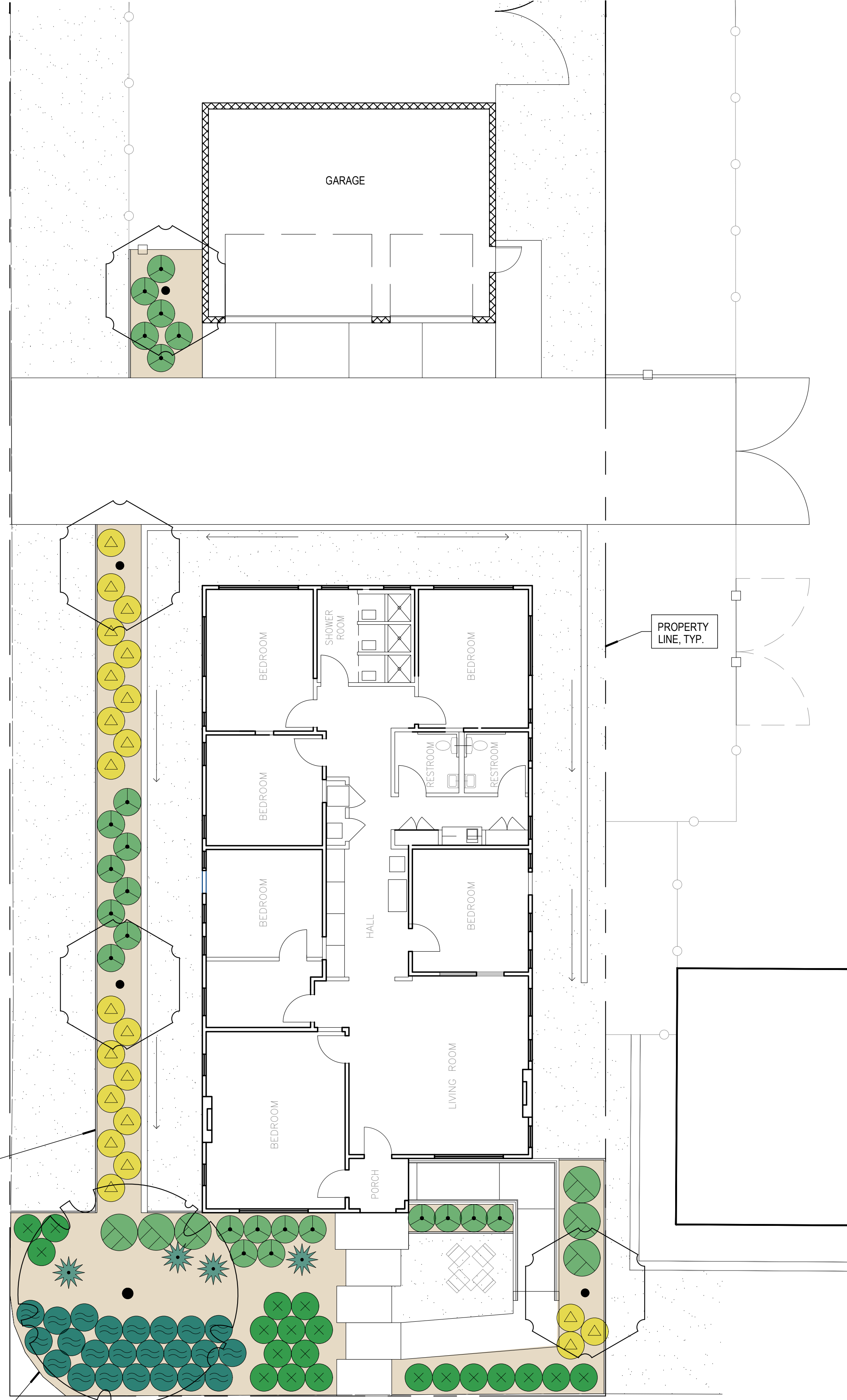
PHLOMIS FRUTICOSA  
JERUSALEM SAGE



ROSMARINUS OFF. 'HUNTINGTON CARPET'  
HUNTINGTON CARPET ROSEMARY



SALVIA LEUCANTHA 'WHITE MISCHIEF'  
WHITE MISCHIEF MEXICAN BUSH SAGE



LANDSCAPE EDGING, TYP.

EXISTING EDGE OF ASPHALT

ALLEY 30

N. DARTMOUTH PLACE

TREE LEGEND						
SYMBOL	BOTANIC NAME COMMON NAME	SIZE	QTY.	WATER USE	HEIGHT / WIDTH	
	ARBUTUS 'MARINA' MARINA STRAWBERRY TREE	24" BOX STD.	4	MOD	30-40 H 10-30 W	
	QUERCUS VIRGINIANA SOUTHERN LIVE OAK	36" BOX STD.	1	LOW	40-70 H 30-50 W	

SHRUB LEGEND						
SYMBOL	BOTANIC NAME COMMON NAME	SIZE / SPACING	QTY.	WATER USE	HEIGHT / WIDTH	EXP. FLOWER
	AGAVE BLUE FLAME	5 GAL	4	LOW	3'-4" H 3'-4" W	FULL / PART N/A
	WESTRINGIA FRUTICOSA 'SMOKEY' SMOKEY COAST ROSEMARY	5 GAL @ 4' O.C.	6	LOW	4'-5" HW	FULL / PART WHITE MOST
	LANTANA MONTEVIDENSIS 'ALBA' WHITE TRAILING LANTANA	1 GAL @ 3' O.C.	20	LOW	1'-2" H 4'-8" W	FULL SUN WHITE MOST
	PHLOMIS FRUTICOSA JERUSALEM SAGE	5 GAL @ 3' O.C.	22	LOW	3'-4" H 3'-5" W	FULL SUN YELLOW SUMMER
	ROSMARINUS OFF. 'HUNTINGTON CARPET' HUNTINGTON CARPET ROSEMARY	1 GAL @ 3' O.C.	23	LOW	1'-2" H 4'-8" W	FULL SUN BLUE SPR
	SALVIA LEUCANTHA 'WHITE MISCHIEF' WHITE MISCHIEF MEXICAN BUSH SAGE	1 GAL @ 3' O.C.	23	LOW	2'-3" H 3'-4" W	FULL SUN WHITE SP/FALL

MATERIALS LEGEND	
SYMBOL	ITEM
	GRAVEL PARKING / WALKWAY PER ARCHITECTURAL PLANS
	STEEL EDGING SEPARATION

TOTAL PLANTED AREA = 1410 SF

**GENERAL PLANTING NOTES**

- VERIFY LOCATION AND DEPTH OF ALL UNDERGROUND UTILITIES PRIOR TO START OF WORK.
- CONTRACTOR SHALL APPLY A CONTACT HERBICIDE WHERE WEEDS ARE PRESENT PER MANUFACTURERS SPECIFICATIONS A MINIMUM OF TEN (10) DAYS PRIOR TO COMMENCEMENT OF ANY PLANTING OR IRRIGATION WORK. WEEDS SHALL BE ALLOWED TO COMPLETELY DE BACK, INCLUDING THE ROOTS BEFORE PROCEEDING WITH WORK.
- REMOVE WEEDS AND GRASSES AND PROPERLY DISPOSE OF WASTE AT A LICENSED DUMP SITE.
- LANDSCAPE CONTRACTOR TO PROVIDE THE FOLLOWING SUBMITTALS FOR REVIEW AND APPROVAL:
  - SOILS REPORT (SEE SHEET L2.0)
  - PHOTOGRAPHS OF PLANT MATERIAL 15 GALLON AND SMALLER (SHRUBS) WITH NURSERY LOCATION
  - PHOTOGRAPHS OF TREES WITH DIMENSIONS AND NURSERY LOCATION FOR TAGGING
  - CUTSHEETS OF ALL PROPOSED DRY GOOD MATERIALS INCLUDING BUT NOT LIMITED TO MULCH, TREE STAKES, TREE TIES, ROOT BARRIERS, PLANT TABLETS, EDGING, WOOD MULCH, SOIL AMENDMENTS, AND JUTE NETTING.
- NO SUBSTITUTIONS FOR PLANT MATERIAL SHALL BE MADE WITHOUT PRIOR WRITTEN APPROVAL BY THE LANDSCAPE ARCHITECT. IF SPECIFIED PLANTS ARE UNAVAILABLE, CONTRACTOR SHALL PROVIDE ALTERNATIVE AVAILABLE SIZE OR SPECIES FOR CONSIDERATION.
- LANDSCAPE ARCHITECT SHALL HAVE THE OPPORTUNITY TO INSPECT AND APPROVE ALL SPECIMEN AND BOX MATERIALS AT JOB SITE PRIOR TO PLANTING. ALL UNACCEPTABLE MATERIAL SHALL BE REMOVED FROM JOB SITE AND REPLACED WITH ACCEPTABLE MATERIAL AT CONTRACTOR'S EXPENSE.
- LANDSCAPE ARCHITECT SHALL APPROVE FINAL PLACEMENT OF TREES PRIOR TO PLANTING. CONTRACTOR SHALL GIVE AT LEAST THREE (3) BUSINESS DAYS NOTICE FOR PLANT LAYOUT APPROVAL.
- LANDSCAPE CONTRACTOR SHALL BE RESPONSIBLE FOR ALL THEFT OR DAMAGE TO PLANT MATERIAL ONCE PLANT MATERIAL IS DELIVERED TO THE JOB SITE. PROVIDE PROPER MEASURES TO SECURE AND PROTECT MATERIAL.
- A REPRESENTATIVE OF THE BOTANICAL NAME TAGS, FURNISHED BY THE NURSERY STOCK SUPPLIER, SHALL REMAIN ATTACHED TO THE PLANTS UNTIL FINAL INSPECTION.
- AFTER PLANTING IS COMPLETE BUT PRIOR TO INSTALLING BARK MULCH OR AGGREGATE MULCH APPLY GRANULAR PRE-EMERGENT AT MANUFACTURER SUGGESTED RATE. PENICILLIN, RONSTAR, OR SNAPSHOT.
- IN ALL SHRUB AND GROUND COVER AREAS APPLY 3" MIN. LAYER OF COATED BARK MULCH PER CAMPUS STANDARDS. CONTRACTOR SHALL SUBMIT SAMPLE TO LANDSCAPE ARCHITECT FOR APPROVAL.
- KEEP MULCH 3" CLEAR FROM THE STEM, TRUNK, OR BASE OF ALL PLANT MATERIAL.
- ALL AREAS SHALL BE GRADED TO SLOPE TO CATCH BASINS OR FLOW LINES AS INDICATED ON THE CIVIL PLANS OR AS DIRECTED BY THE LANDSCAPE ARCHITECT. SOIL SHALL BE 1.5" BELOW ADJACENT HEADERS AND PAVING IN GROUND COVER AREAS.
- UPON COMPLETION OF ALL PLANTING OPERATIONS, THE PORTION OF THE PROJECT USED FOR THE APPARATUS OF THIS WORK SHALL BE CLEANED OF ALL DEBRIS, SUPERFLUOUS MATERIAL AND EQUIPMENT. ALL SUCH MATERIALS AND EQUIPMENT SHALL BE ENTIRELY REMOVED FROM THE PROJECT SITE. PAVING SHALL BE WASHED CLEAN AT THE COMPLETION OF WORK.
- UPON COMPLETION OF PLANTING, THE CONTRACTOR SHALL ARRANGE FOR A SUBSTANTIAL COMPLETION INSPECTION BY LANDSCAPE ARCHITECT. CONTRACTOR SHALL CORRECT ANY DISCREPANCIES FOUND PRIOR TO FINAL INSPECTION AND ACCEPTANCE OF THE PROJECT.
- CONTRACTOR SHALL INCLUDE AND PERFORM A 90 DAY MAINTENANCE PERIOD UPON SUBSTANTIAL COMPLETION OF THE ENTIRE SCOPE OF WORK. MAINTENANCE PERIOD IS FOR THE ENTIRE SITE. NO INDIVIDUAL PORTIONS WILL BE RELEASED UNDER A SEPARATE MAINTENANCE UNLESS PRIOR WRITTEN APPROVAL IS PROVIDED.
- DEAD OR DYING PLANT MATERIAL SHALL BE REPLACED WITHIN ONE WEEK DURING THE MAINTENANCE PERIOD. DO NOT WAIT TO REPLACE ALL PLANTS AT END OF MAINTENANCE PERIOD.
- GUARANTEE: ALL PLANT MATERIAL SHALL BE GUARANTEED FOR REPLACEMENT AFTER FINAL INSPECTION AS FOLLOWS:
  - 15 GAL. AND SMALLER-90 DAYS
  - 24" BOX. AND LARGER-ONE YEAR
- UPON FINAL ACCEPTANCE OF THE WORK, THE CONTRACTOR SHALL SUBMIT TO THE OWNER SIGNED ORIGINALS OF ALL MATERIALS AND LABOR RELEASES.
- PLANT QUANTITIES IN LEGEND ARE FOR REFERENCE ONLY. CONTRACTOR TO PROVIDE AND INSTALL ALL PLANTS SHOWN ON PLANS.
- REMOVE NURSERY STAKE FROM ALL TREES. PROVIDE STANDARD DOUBLE STAKE OR SINGLE STAKE FOR EACH TREE UNLESS OTHERWISE INDICATED IN FIELD PER ARCHITECT'S OR LANDSCAPE ARCHITECT'S DIRECTION.

**CONSTRUCTION OBSERVATION**

THE LANDSCAPE CONTRACTOR SHALL SCHEDULE THE FOLLOWING SITE OBSERVATION MEETINGS WITH AT LEAST 3 DAYS PRIOR NOTIFICATION. THE FOLLOWING ITEMS SHALL BE REVIEWED:

- PRE-JOB/KICK-OFF MEETING WITH LANDSCAPE CONTRACTOR, GENERAL CONTRACTOR, AND LANDSCAPE ARCHITECT.\*
- TREE MATERIAL AND LAYOUT: REVIEW OF ALL TREES ON SITE PRIOR TO PLANTING, WITH TREE PITS DUG AND INSPECTION TUBES PREPARED WHERE APPLICABLE.
- SUBSTANTIAL COMPLETION MEETING FOR PUNCH LIST PREPARATION.\*
- PUNCH LIST BACK CHECK FOR COMPLETION AND START OF 90 DAY MAINTENANCE PERIOD.\*
- TURN-OVER MEETING ONE WEEK PRIOR TO COMPLETION OF 90 DAY MAINTENANCE PERIOD FOR FINAL ACCEPTANCE.\*

\*SIMULTANEOUS WITH IRRIGATION MEETING LIST

