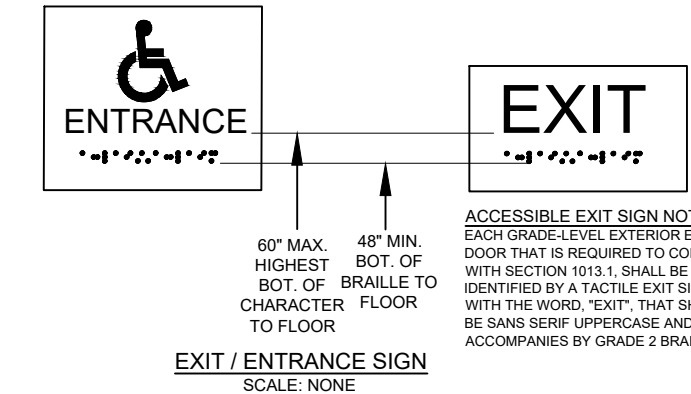
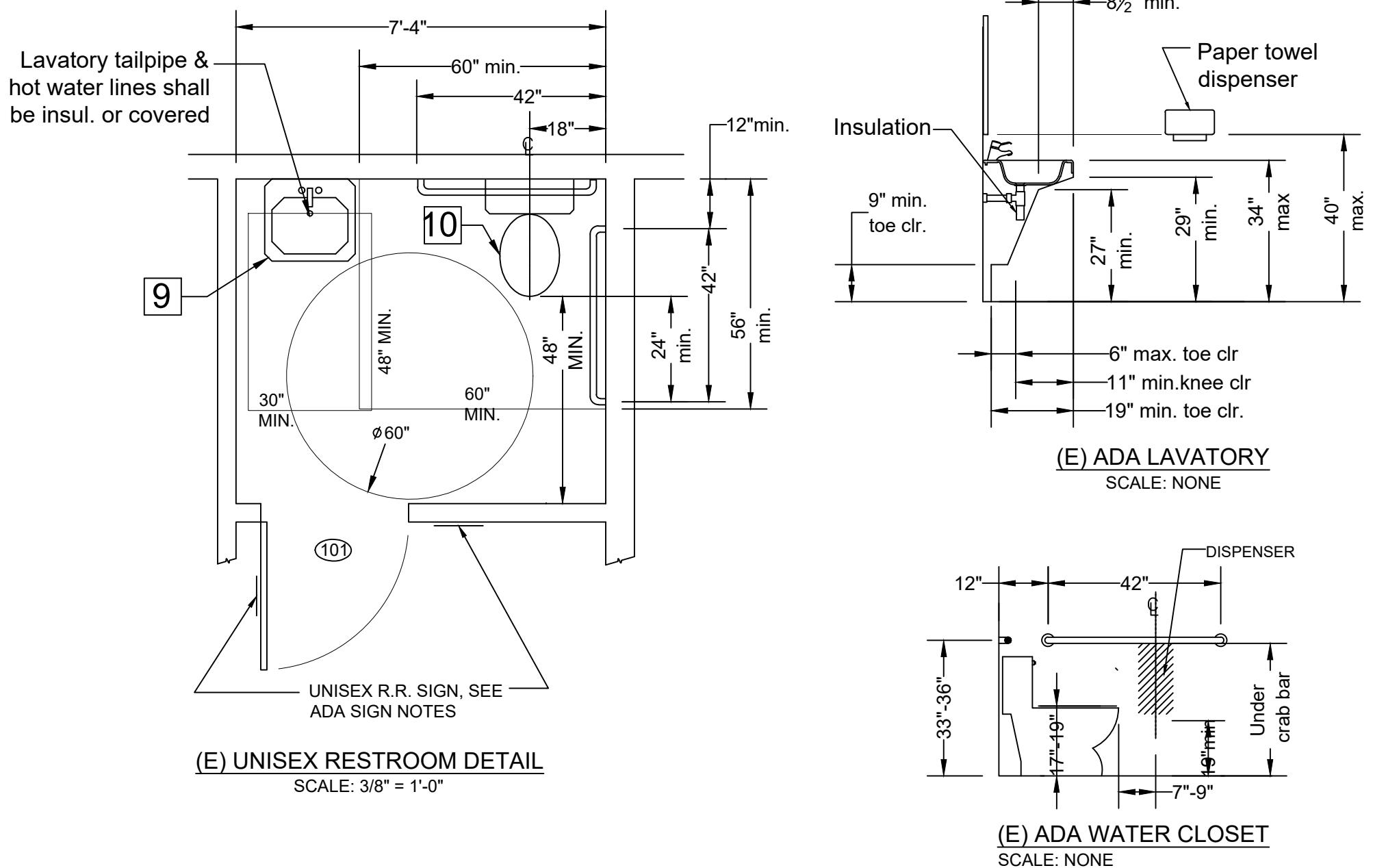


DOOR SCHEDULE					
SYMBOL	SIZE	THK.	MATERIAL	HARDWARE	REMARK
101	3'-0"x7'-0"	1-3/8"	H.C. WOOD	LEVER	EXISTING
102	3'-0"x7'-0"	1-3/8"	H.C. WOOD	LEVER	EXISTING W/ ADA SIGNS
103	3'-0"x 84"	2"	ALUMINUM	PUSH/PULL HANDLE	EXISTING
104	3'-0"x7'-0"	1-3/8"	STEEL	LEVER	EXISTING

WINDOW SCHEDULE					
SYMBOL	SIZE	TYPE	GLAZING	HEADER HT.	REMARK
A	EXISTING STORE FRONT			8'-0"	EXISTING
A	WINDOW TO REMAIN				

- DOOR NOTES**
- ALL REQUIRED EXIT DOORS TO HAVE 32" CLEAR OPENING AT 90 DEGREES (36" DOOR).
  - THRESHOLD SHALL BE NO HIGHER THAN 1/2" ABOVE FLOOR. EDGE TO BE BEVELED WITH A SLOPE NOT GREATER THAN 1 TO 2, IF MORE THAN 1/2".
  - WIDTH AND CLEAR AREA ON SWING SIDE OF THE DOOR SHALL EXTEND 24" PAST STRIKE EDGE FOR EXTERIOR DOORS AND 18" PAST STRIKE EDGE FOR INTERIOR DOORS.
  - ALL BUILDING ENTRANCE THAT ARE ACCESSIBLE TO AND USABLE BY PERSONS WITH DISABILITIES SHALL BE IDENTIFIED WITH AT LEAST ONE STANDARD SIGN AND WITH DIRECTIONAL SIGNS, AS REQUIRED, TO BE VISIBLE TO PERSONS ALONG APPROACHING PEDESTRIAN WAYS.
  - EXIT DOORS SHALL BE OPENABLE FROM INSIDE WITHOUT THE USE OF A KEY OR ANY SPECIAL KNOWLEDGE OR EFFORT.
  - VERIFY NEW AND EXISTING EXIT DOORS AND PROVIDE A SIGN ABOVE THE MAIN ENTRY DOOR WITH 1" HIGH LETTERS ON CONTRASTING BACKGROUND THIS DOOR TO REMAIN UNLOCKED WHEN BUILDING IS OCCUPIED. DOORS WITH CLOSERS TO BE ADJUSTED TO HAVE A MAXIMUM OPENING FORCE OF 5 LBS AT INTERIOR AND 5 LBS AT EXTERIOR DOORS.
  - STOREFRONT DOORS:  
CENTER GLAZED 1 1/2" X 4 1/2" FRAMING. GLAZED WITH 1/2" SINGLE PANE GLAZING. FINISH IS TO BE ARCHITECTURAL CLASS BRONZE ANODIZED HAVING A MINIMUM THICKNESS OF 0.4 TO 0.7 MIL. NARROW STILE DOORS TO INCLUDE 10" BOTTOM RAILS AND FULL WEATHER STRIPPING, INCLUDING CONTINUOUS DUAL ADJUSTABLE WEATHERING AT MEETING STILES. FINISH TO MATCH STOREFRONT WINDOWS. NOTE: ALL FIXED STOREFRONT FRAMING IS TO HAVE EXTRUDED SILL FLASHING WITH END DAMS. EXTERIOR DOOR FRAMES SHALL BE 16 GA. WELDED FRAMES.



- FLOOR PLAN KEY NOTES:**
- (E) CASH REGISTERED / RECEPTION COUNTER, 34" MAX. HEIGHT, 30" WIDE MIN. ADA COMPLIANCE
  - (E) SERVICE COUNTER (SERVING COUNTER DETAIL)
  - (E) ELECTRICAL PANEL
  - (E) FLOOR SINK
  - (E) FIXED DINING TABLE
  - (E) 12" FIXED DINING SEATS
  - (E) ADA COMPLIANCE DINING TABLE
  - (E) ADA COMPLIANCE VANITY
  - (E) ADA COMPLIANCE WATER CLOSET
  - (E) WATER HEATER IN UTILITY LOFT ABOVE.
  - (N) 1/2" TEMPER GLASSES
  - (E) STAIRS
  13. RAISED FLOOR SEATING WITH TABLE
  14. (E) ENTRANCE ACCESSIBLE SIGN
  15. (E) TACTILE "EXIT" SIGN

**WALL LEGEND:**

EXIST.

NEW

REMOVED

1-HR FIRE

ROOM FINISH SCHEDULE					
ITEMS	ROOM NAME				
	FLOOR	BASE	WALL	CEILING	
QUARRY TILE SMOOTH					
EPOXY/CONC.					
SHEET VINYL CONT. CURVE UP AS BASE					
CARPET					
CERAMIC TILE SMOOTH					
STAINLESS STEEL					
SEAL CONC. SMOOTH					
4" - 6" HIGH VINYL BASE					
6" CER. TILE W/3/8" RAD. WHITE COLOR COVERED					
QUARRY TILE, 6" HIGH W/ 3/8" RAD WHITE COVERED					
12" CERAMIC TILE					
6" HIGH SHEET METAL					
CONTINUE W/ 3/8" RADIUS					
DRYWALL (GYPSUM BOARD)					
HIGH GLOSS ENAMEL PAINT, WHITE					
WASHABLE SMOOTH					
FLAT PAINT					
WATER RESISTANT WALL, 8'-0" HIGH, FRP					
WATER RESISTANT WALL 4'-0" HIGH, FRP					
DRYWALL CEILING					
METAL GALV. PANEL					
HIGH GLOSS ENAMEL PAINT WHITE					
WASHABLE SMOOTH					
"USG" GYPSUM WHITE VINYL					
T-BAR CEILING PANEL					
2' x 4' ACOUSTIC CEILING, PANEL					
METAL GALV. PANEL					

**SERVICE AREA**

**PREP., STORAGE, SERVICE AREA**

**RESTROOM**

**DINING AREA**

**REMARK**

**FINISH SCHEDULE NOTES:**

- 1) WALL AND CEILING IN ALL AREAS EXCEPT DINING AREA SHALL BE DURABLE, SMOOTH, AND NONABSORBENT, WITH A LIGHT COLOR (LIGHT COLORED AS HAVING A LIGHT REFLECTANCE VALUE OF 70% OR GREATER), EASILY CLEANABLE, AND WASHABLE FINISH.
- 2) ALL COUNTER SURFACE IN CLUDING UNDERSIDE TO BE DURABLE, SMOOTH, NONABSORBENT, EASILY CLEANABLE AND WASHABLE FINISH (MAY REQUIRE STAINLESS STEEL OR NSF APPROVAL HIGH PRESSURE LAMINATE).
- 3) FLOOR UNDER EQUIPMENT AT THE AND AT THE BASE COVES SHALL BE COMPLETELY SMOOTH. FLOOR SURFACES WHITH CONTAIN SLIP RESISTANT AGENTS SHALL BE RESTRICTED TO TRAFFIC AREAS ONLY.
- 4) ALL EQUIPMENT SHALL BE EASILY MOVABLE (IE. ON CASTERS), MIN. 6 INCHES ROUND METAL LEGS, OR SEA TO MIN. 2 INCHES SOLID MASONRY ISLAND WITH MIN. THREE-EGHTHS INCH COVERED RADIUS.
- 5) FLOOR SMOOTH CONCRETE MUST BE TOP-SET TYPE CERAMIC COVERED BASE.
- 6) WATER RESISTANT WALLS (I.E., FRP, STAINLESS STEEL, CERAMIC TILE) ARE REQUIRED BEHIND ALL SINKS AND DISHWASHERS. MATERIALS TO BE MIN. 8" HIGH FOR CITY.
- 7) A MIN. 20-FOOT CANDLES OF LIGHT MEASURED 30" A.F.F. IN KITCHEN, UTENSIL WASHING AREA, SERVICE AREA, THROUGH OUT FACILITY FOR DURING GENERAL CLEANING UP ACTIVITY.
- 8) A MIN. 10-FOOT CANDLES OF LIGHT MEASURED 30" A.F.F. IN RESTROOM AND STORAGE ROOMS.

**MATERIAL NOTES:**

**CEILING PANEL:**  
THE FOLLOWING CEILING CEILING PANEL ARE APPROVED.  
ARMSTRONG #9170 870 MINA BOARD ML (MTL LAMINATE NON-PERFORATED)  
ARMSTRONG #1721 OR #884 MYLAR FIRE GUARD CONCON-PERFORATED)  
DOMTAR GYPSUM #3270 WHITE FACING PANEL  
U.S. GYPSUM #3270 VINYL ROCK  
U.S. GYPSUM #56091 ENVIROGARD WITH CLEAN ROOM FACING

**FLOOR COVERING:**  
THE FOLLOWING ARE APPROVED.  
TILES - AMERICAN CLEAN TOPSET CERAMIC COVERED BASE - B&W TILE CO.  
SHEET VINYL - ARMSTRONG CONCRETE SEALER-AMERITONE  
THE CERAMIC AND QUARRY FLOOR TILES ARE SMOOTH, DURABLE, NONABSORBENT, AND EASILY WASHABLE.

EQUIPMENT SCHEDULE				
ALL EQUIPMENTS SHALL BE NSF APPROVED				
KITCHEN AREA EQUIPMENT ITEMS				
No.	DESCRIPTIONS	QTY.	BRAND/MODEL	NOTES
K01	(E) Type I Hood 12'x4'	1	Duke 96WB	
K01a	(E) Hood Exhaust Fan	1	Greenheck 222SWB	
K01b	(E) Make-up Air	1	Ares DE-2	
K02	(N) Type I Hood 5'x4'		Econ-Air	
K03				
K04	(E) Deep Fryer	1	Avantco / F5-ES-N 65	100K BTU / HR (3/4" LINE)
K05				
K06	(E) Stock Pot Range	1	Cooking Performance Group / CPG-DSPR-N	160K BTU / HR (3/4" LINE)
K07	(E) 60" Range w/ 6 Burners and Oven	1	Cooking Performance Group / S60-G36-N	240K BTU / HR (3/4" LINE)
K08	(E) 36" Range w/ 4 Burners, 36" Griddle and 2 Ovens	1	Cooking Performance Group / S36-N	210K BTU / HR (3/4" LINE)
K09	(N) Charbroil Grill	1	Westlake / EBC-48S	120K BTU / HR (3/4" LINE)
K10				
K11				
K12	(E) WALK-IN REF. W/ REMOTE CONDENSER	1	NOR-LAKE INC. KL7768	
K13	(E) WALK-IN FREEZER W/ REMOTE CONDENSER	1	NOR-LAKE INC. KL7768	
K14	(E) Reach-in Refrigerator	2	True / T49-HC	76"x35", 115/60/1-5.4A
K15	(E) Double Glass Door Refrigerator	1	True / FLM-54-TSL01	115/60/1-6.3A
K16				
K17				
K18				
K19				
K20	(E) Ice Maker, 48Lx33Wx46H		HOSHIZAKI / F-1500MAH	208V-230/60/1-16.3A
K21				
K22	(E) Worktop Refrigeration - 2 Doors		Delfield	115/60/1-1.5A/173W
K23	(E) Air curtain		Mars	120/60/1-260W
K24				
K25				
K26	(E) Hand sink (14"x10") S.S., W/ splash guard, soap & paper towel disp.	3	Advance Tabco 7-PS-68	
K27	(E) 3-Compartment sink-24Wx90Lx44.5H (indirect connection) W/ splash guards	1	Advance TABCO / 7-PS-40	
K28	(E) SS Prep-Sink	2	Allstrong, S1B1818-2D18-C	
K29				
K30		1		
K31	(E) Mop sink	1	Regency 600S11818SB	
K32				
K33				
K34				
K35	(E) SS Wall Shelves - Varies sizes	1	Advance Tabco	
K36	(E) Storage Shelves (3 Tiers min.)	32'	Advance Tabco / EC-1848	
K37	(E) S.S. Work Tables - Varies sizes	3	Duke /314S-3060	
K38	(E) 5-Tier Lockers - 12Wx18Dx36H	1		
K39				
K40				

**MTN DESIGN ENGINEERING BUILD**

PO BOX 52,  
GARDEN GROVE,  
CA 92842

9646 GARVEY AVE.  
SOUTH EL MONTE  
TEL: 714-943-4592  
mtnmth@msn.com

**KOZU RESTAURANT**  
175 INDIAN HILL BLVD #102B,  
CLAREMONT, CA 91711

REVISIONS:

DATE	BY

DRAWING TITLE:

**FLOOR PLAN  
EQUIPMENT SCHEDULE  
ADA RESTROOMS**

DRAWN BY: DN

DATE: 4/13/2025

PLAN #: 20250409-175

SCALE: AS NOTED

PLOT DATE: 04/20/2025

