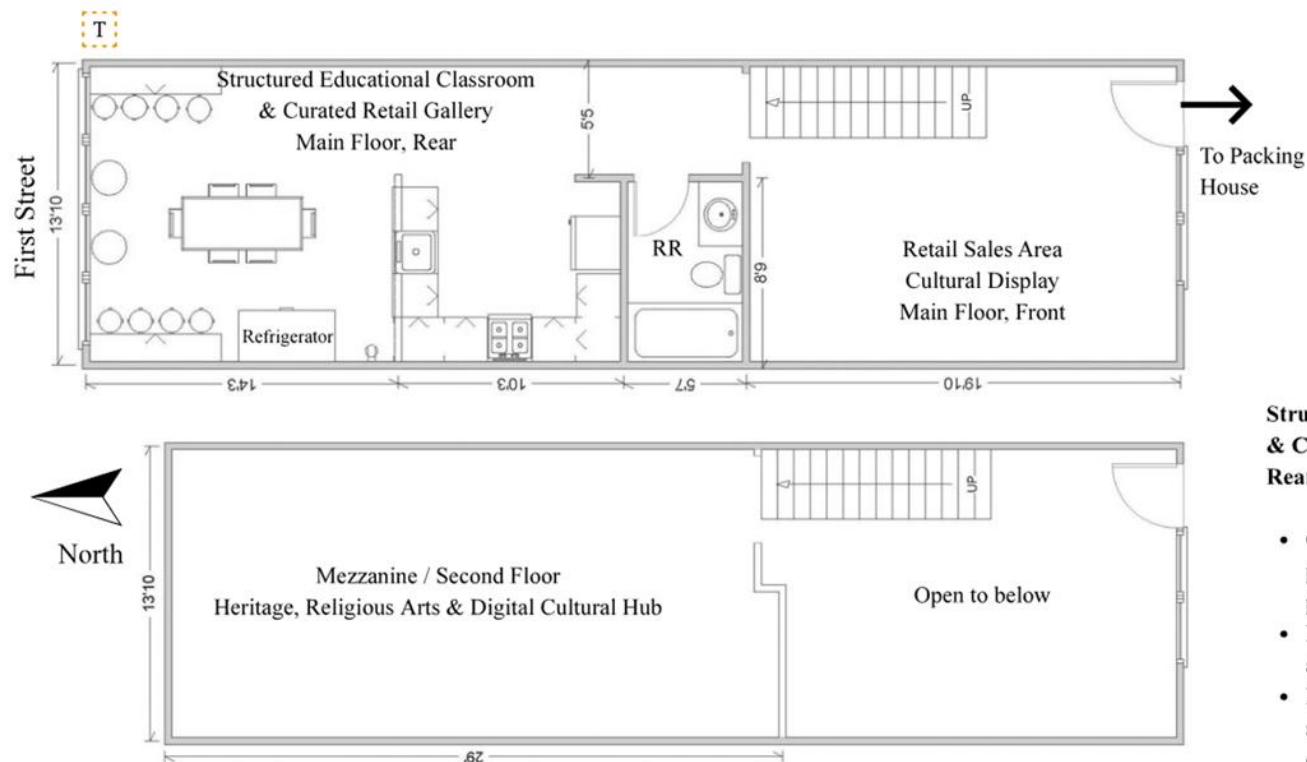


Sake Museum Floor Plan

532 W. First Street, Suite 209, Claremont.



Structured Educational Classroom & Curated Retail Gallery (Main Floor, Rear)

- Classes: Minimum enrollment: 5 participants, Maximum capacity: 12 participants per session and 1 instructor
- Function: Professional certification and advanced education
- Purpose: Vocational training, specialized fermentation science and cultural & aesthetic workshops as well as integrated retail and tasting.

Retail Sales Area and Cultural Display / Exhibition (Main Floor, Front)

- Function: Local crafts, glassware, sake ware, sake heritage
- Rotating exhibitors
- Seasonal festival themes
 - Example: Autumn "Momiji" with samurai armor & kimono
- National map of Japan - 47 prefectures
- Alcohol brewing process (12 QR video frames)
- Historical evolution
- Japanese tea varieties

**Claremont Village Expansion Area
Specific Plan Requirements**

First Floor: 13'10" W x 50'9" L	711 SQ FT
Mezzanine: 13'10 W x 29'0" L	403 SQ FT
Total Gross Floor Area	1,114 SQ FT
Kitchenette / Restroom: 8'9" W x 15'10" L	134 SQ FT
Net Floor Area	980 SQ FT

Structured Educational Classroom & Curated Retail Gallery

13'10" W x 14'3" L 196 SQ FT (20% of Net Floor Area)
Maximum Allowable: 30%

Mezzanine - Heritage, Religious Arts & Digital Cultural Hub (Second Floor)

- Function: High-end immersion space featuring a traditional Japanese-style area focused on spiritual depth and international tourism
- Purpose: Promote and propagate the history and philosophy of traditional Japanese religions, antiquities, prefectural and aesthetic experiences.